



DT15

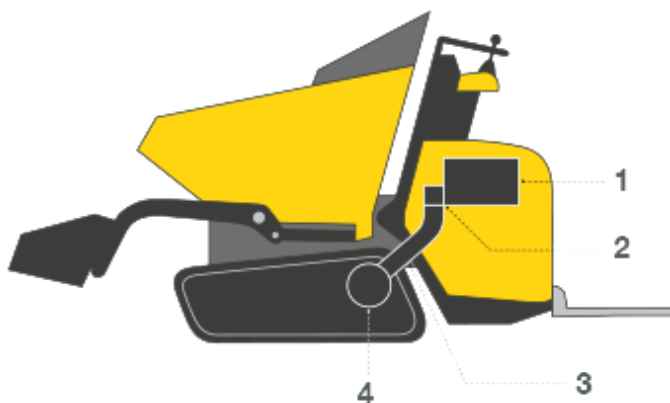
Track Dumpers



Maximum power: DT15

The track dumper DT 15 is the ideal transporter on all types of soil, such as gravel or sand, as well as boggy or hilly terrain. The one-piece engine hatch and optimal configuration of the service points make daily maintenance easy.

- The hydrostatic drive enables easy and comfortable operation.
- Folding ROPS roll bar for passageways with low-headroom.
- Low center of gravity for increased stability and guaranteed gradeability up to 62%.
- Auxiliary hydraulics as standard for additional attachments, such as concrete mixers, breakers etc.
- A variety of robust and stable hydraulic tipping skips and other attachments are available, for instance a front-tipping skip, a high-tipping skip, a 3-way side-tipping platform or a hydraulic high-volume concrete mixer.

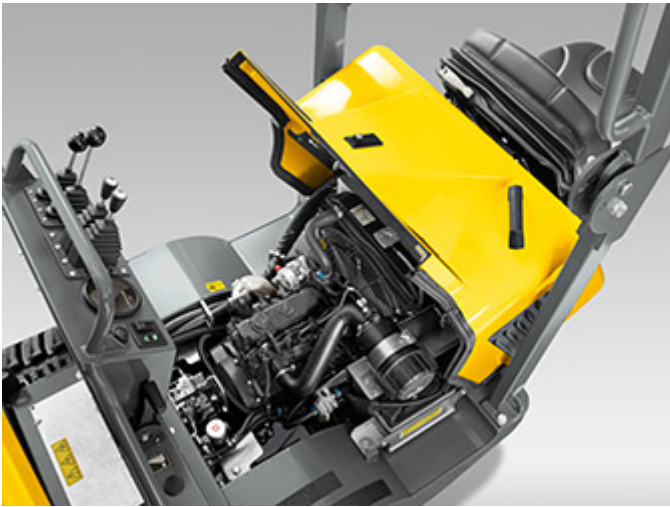


1. Diesel engine
2. Dual variable displacement pump
3. High pressure lines from the pump to the motor
4. Distributor transmission/axle

Hydrostatic drive system

Simply start and off you go: Thanks to the hydrostatic drive system, no frequent gear changing is required and the operator can focus entirely on his work. Ideal for rental parks or frequently changing operators.

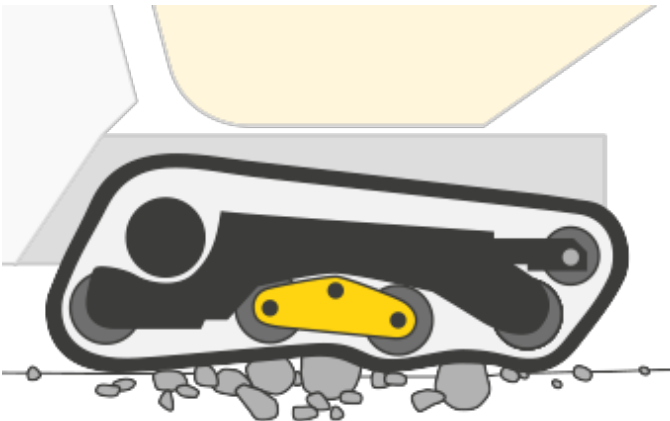
- Hydraulically activated, pilot-controlled forward + reverse travel lever for sensitive operation of the DT12, DT15 and DT25
- Two driving positions: optionally sensitive with a high tractive force or fast (not in DT10)
- Hydraulically activated drive system and work hydraulics can be operated independently from each other
- Low service and maintenance costs thanks to the low-wear drive system



Maintenance

Valuable time can be saved during maintenance and therefore money can also be saved. The better and faster the access to the hydraulics or engine are, the faster the machine is back in application.

- Good service access in order to safely take care of daily control procedures
- Quick access to the maintenance points
- High degree of safety due to the lockable engine hood



Always constant propulsion,
because the suspension-mounted rollers adapt to any terrain.

Technical specifications

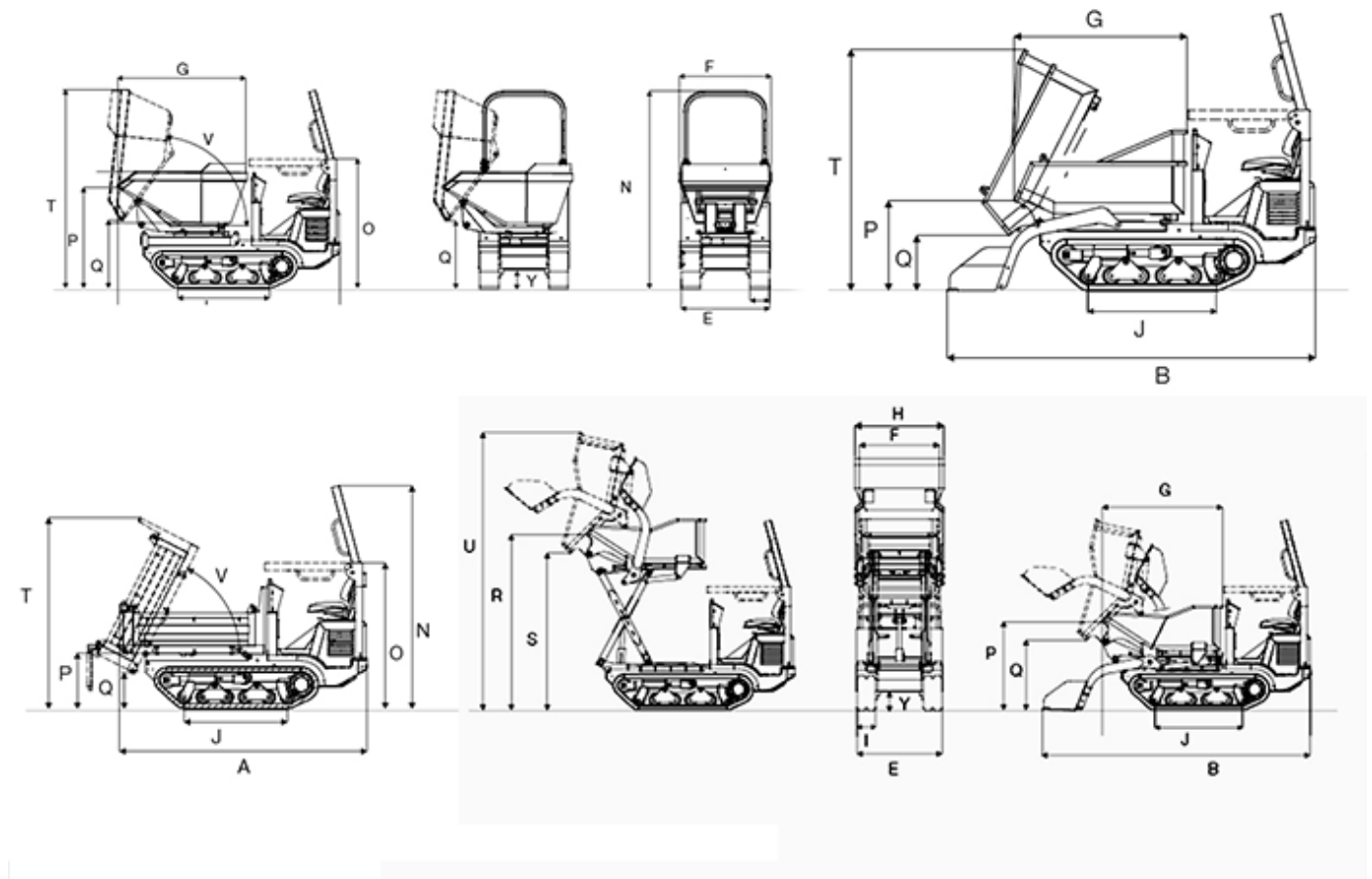
	Front tip skip	Swivel Tip skip	High tip skip	Special skip	Concrete mixer
Operating data					
Shipping weight Diesel kg	1,310	1,330	1,540	1,270	1,430
Shipping weight Selbstladeeinrichtung kg	1,390	0	1,620	0	1,510
Payload max. kg	1,500	1,500	1,500	1,500	1,500
Skip capacity level I	660	550	632	520	0
Skip capacity heaped I	800	760	650	690	360
L x W x H ROPS mm	2,585 x 1,080 x 2,372	2,674 x 1,080 x 2,372	2,609 x 1,080 x 2,372	2,640 x 1,080 x 2,372	2,403 x 1,080 x 2,372
Engine / Motor					



	Front tip skip	Swivel Tip skip	High tip skip	Special skip	Concrete mixer
Engine performance Diesel kW	15	15	15	15	15
at rpm rpm	3,000	3,000	3,000	3,000	3,000
Travel speed 1 km/h	4	4	4	4	4
Travel speed Diesel km/h	7.5	7.5	7.5	7.5	7.5
Gradeability %	27	27	27	27	27
Fuel tank capacity l	24	24	24	24	24



Dimensions



	Front tip skip	Swivel tip skip	High tip skip	Special skip	Concrete mixer
A Length (without running board) mm	2,585	2,674	2,609	2,640	2,403
B Length with self-loading equipment (without running board) mm	3,160	0	3,365	0	3,250
E Width Undercarriage mm	1,080	1,080	1,080	1,080	1,080
F Skip width mm	1,054	1,102	1,000	1,020	926
G Skip length mm	1,482	1,537	1,500	1,547	0
H Width with self-loading equipment mm	1,080	0	1,121	0	1,080
I Chain width Track mm	230	230	230	230	230
J Length Track mm	1,100	1,100	1,100	1,100	1,100
N Height over ROPS rollbar mm	2,372	2,372	2,372	2,372	2,372
O Height over ROPS rollbar (collapsed) mm	2,022	2,022	2,022	2,022	2,022
P Height of skip front edge mm	770	1,210	1,104	1,150	1,254



Q Dumping height mm	472	810	873	380	762
R Height of skip front edge when raised mm	0	0	2,193	0	0
S Dumping height of high-tipping skip when raised mm	0	0	1,963	0	0
T Height Max., skip raised mm	2,070	2,381	2,383	2,040	1,647
U Height Max., high-tipping skip raised mm	0	0	3,472	0	0
V Tip-out angle Skip dumping °	63	84	78	63	62
Y Ground clearance mm	224	224	224	224	224

Please note

that product availability can vary from country to country. It is possible that information / products may not be available in your country. More detailed information on engine power can be found in the operator's manual; the stated power may vary due to specific operating conditions.

Subject to alterations and errors excepted. Applicable also to illustrations.

Copyright © 2016 Wacker Neuson SE.